

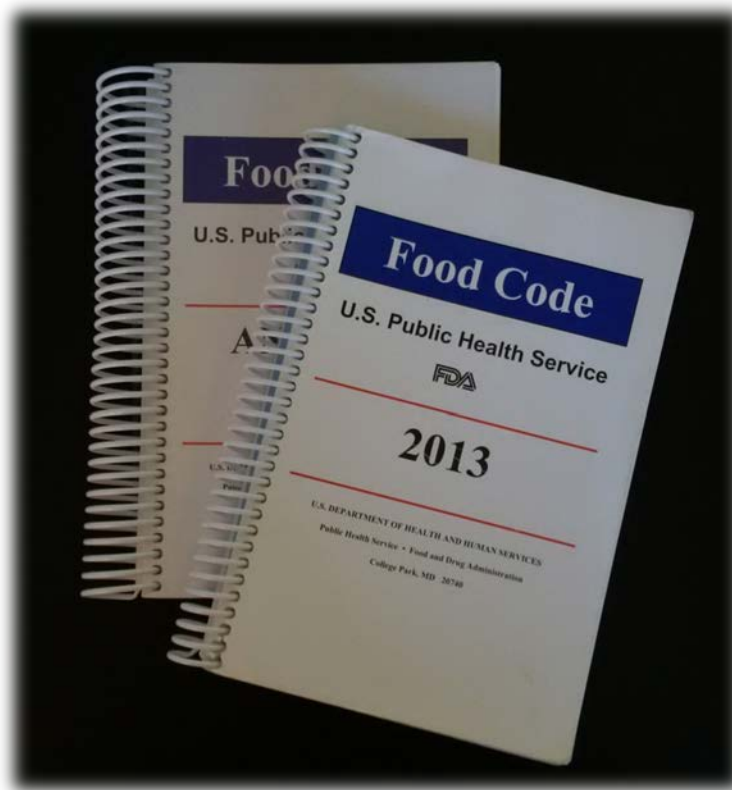
Food Code Interpretations

*Greg A. Abel
Retail Food Specialist
U.S. Food and Drug Administration
Office of Regulatory Affairs
Minneapolis, Minnesota*

Food Code Interpretations aka “Shoot the FDA”

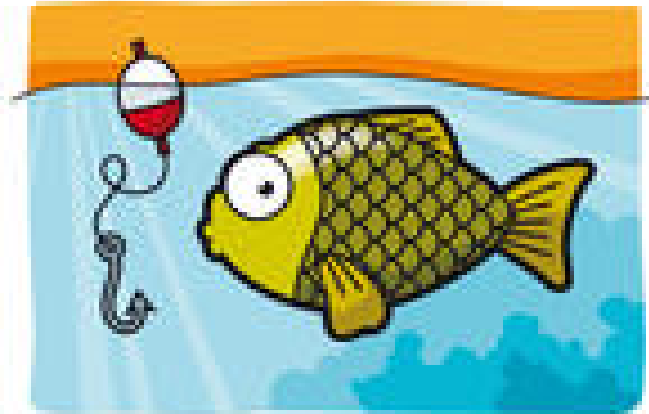
*Greg A. Abel
Retail Food Specialist
U.S. Food and Drug Administration
Office of Regulatory Affairs
Minneapolis, Minnesota*

Food Code Interpretations



Or not, Whatever you think is best

What questions do you have?

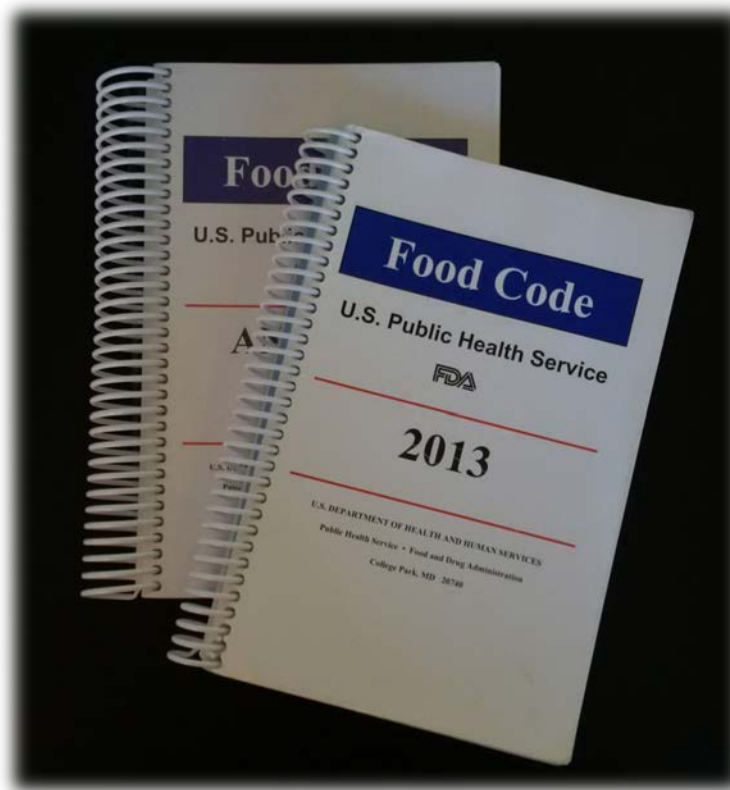


Bun Storage 3-305.12 (B)



The classic model on behalf of - *Food Storage, Prohibited Areas*

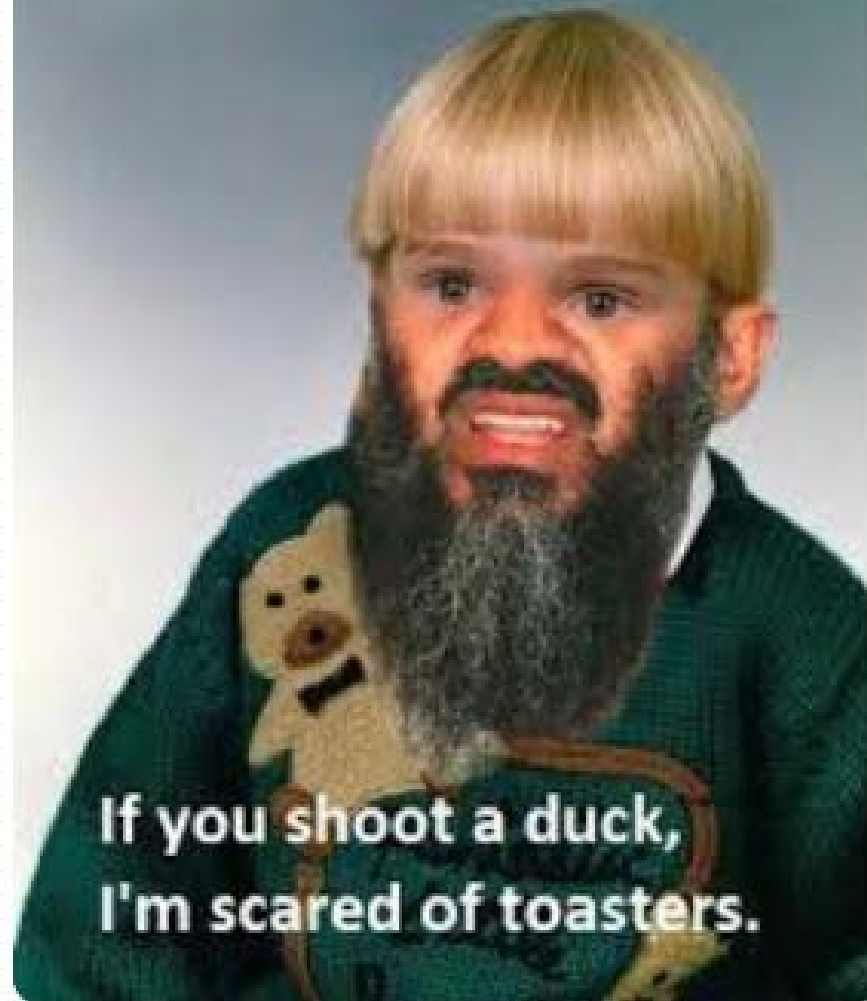
Food Code Interpretations



Greg's Corn Sandwich



Goats are like mushrooms



If you shoot a duck,
I'm scared of toasters.

WELL WELL WELL



**WOULD YOU LOOK
AT THE THYME**

FDA Minneapolis Office



250 Marquette Ave.

Wiping Cloth Violations





► Use



Dressing packet