

# Drug Trends

Sgt. Paul Wilson  
CIU Supervisor  
Rochester PD  
507-328-6933  
pwilson@rochestermn.gov



This Means That The Party Is Over

# Topics for today's discussion

- 4 main drugs we will discuss today -  
Marijuana, Cocaine, Methamphetamine and Heroin
  - Physical characteristics and qualities
  - Effects and methods of use
- Cartel business model synopsis
- Cartel influence in US

# Marijuana



# Marijuana

- Most Common.
- Often glamorized and use is down-played.
- Active ingredient- THC- obtained by ingesting or inhaling.
- Varies in potency.
- Disrupts coordination and balance, impairs memory and attention; commonly known as a gateway drug for both sellers and users.

# Marijuana – Popularity in use and sales

- Recent increase in sales and quantity in area largely due to states that allow medicinal and recreational marijuana. Dispensaries have more than they need and suppliers have realized there is more money to be made by selling marijuana illegally.
- Marijuana being transported from Washington, Colorado, etc. being sold in central and eastern states for up to \$6000 a pound.
- Increase in sales and use on the street; lots of young males selling high grade weed making lots of money.
- Increase in violence due to the money; increase in thefts, home invasions, assaults and other violence due to money kept or owed, etc.

# Marijuana Buds



# Marijuana- Effects, Signs & Symptoms

## ➤ **SHORT-TERM EFFECTS**

- Sensory distortion
- Panic
- Anxiety
- Poor coordination of movement
- Lowered reaction time
- After an initial “up,” the user feels sleepy or depressed
- Increased heartbeat (and risk of heart attack)

## ➤ **LONG-TERM EFFECTS**

- Reduced resistance to common illnesses (colds, bronchitis, etc.)
- Suppression of the immune system
- Growth disorders
- Increase of abnormally structured cells in the body
- Reduction of male sex hormones
- Rapid destruction of lung fibers and lesions (injuries) to the brain could be permanent
- Reduced sexual capacity
- Study difficulties: reduced ability to learn and retain information
- Apathy, drowsiness, lack of motivation
- Personality and mood changes
- Inability to understand things clearly





# Butane Hash Oil- Dabs

- Finely ground marijuana is stuffed into an extractor, which is a tube or cylinder made of glass or stainless steel. The cylinder is then filled with liquid butane, which extracts the active ingredients from the marijuana and drips down out of the cylinder. The butane is evaporated from the mixture using a hot water bath. What's left is the concentrated hash oil.



# BHO - Dangers

- Explosions, flash fire due to use of butane or other chemicals during production.
- Highly concentrated THC in finished product – unknown reactions during use.
- Butane toxicity, other harmful chemicals.

# E- Cigarettes

- Can be used to smoke any water soluble controlled substance



# Cocaine



# Cocaine

- Powdered or Crack.
- Powdered cocaine is converted to crack through process of dissolving cocaine in ammonia or sodium bicarbonate to remove impurities. The solution is then boiled and the solids separated; solid left is crack. It is no longer water soluble, must be smoked. Process removes impurities and allows ease of packaging, sales and use.
- Very powerful, short acting stimulant.
- Typically snorted, smoked or injected, can be eaten.
- Processed from coca leaves.
- Smuggled into United States from South America and Mexico; numerous methods of smuggling.

# Cocaine Processing

- It takes approximately 100 lbs of coca leaves to process one pound of cocaine.
- Coca farmers receive approximately \$1 - \$3 for each kilo of leaves.
- Extractors will sell the cocaine for approximately \$3000 per kilo or may be paid a flat rate by a cartel.
- A cartel will sell the kilo anywhere from \$10,000 to \$15,000.
- Once the kilo crosses into US, the price rises significantly.
- A kilo of cocaine in Minnesota will cost approximately \$25,000.



# Cocaine Powder



A Kilo Brick of Cocaine  
from the Publisher Group



# Crack Cocaine





# Cocaine - Effects, Signs & Symptoms

## ➤ **SHORT-TERM EFFECTS**

- Loss of appetite
- Increased heart rate, blood pressure, body temperature
- Contracted blood vessels
- Increased rate of breathing
- Dilated pupils
- Disturbed sleep patterns
- Nausea
- Hyperstimulation
- Bizarre, erratic, sometimes violent behavior
- Hallucinations, hyperexcitability, irritability
- Tactile hallucination that creates the illusion of bugs burrowing under the skin
- Intense euphoria
- Anxiety and paranoia
- Depression
- Intense drug craving
- Panic and psychosis
- Convulsions, seizures and sudden death from high doses (even one time)

# Cocaine - Effects, Signs & Symptoms

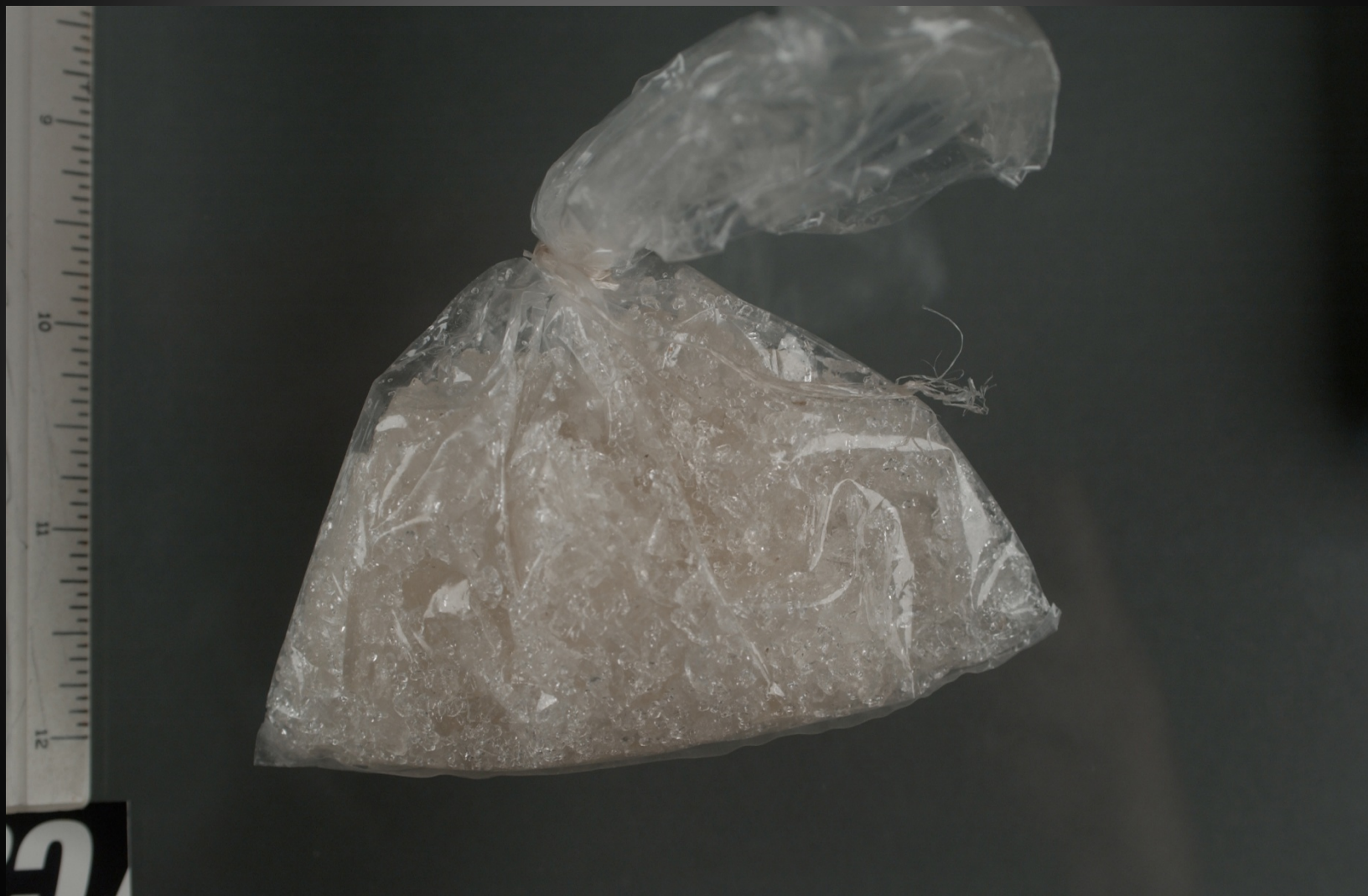
## ➤ LONG-TERM EFFECTS

- Permanent damage to blood vessels of heart and brain
- High blood pressure, leading to heart attacks, strokes, and death
- Liver, kidney and lung damage
- Destruction of tissues in nose if sniffed
- Respiratory failure if smoked
- Infectious diseases and abscesses if injected
- Malnutrition, weight loss
- Severe tooth decay
- Auditory and tactile hallucinations
- Sexual problems, reproductive damage and infertility (for both men and women)
- Disorientation, apathy, confused exhaustion
- Irritability and mood disturbances
- Increased frequency of risky behavior
- Delirium or psychosis
- Severe depression
- Tolerance and addiction (even after just one use)

# Cocaine Paraphernalia



# Methamphetamine



# Methamphetamine

- Known as crank, ice, speed, glass, etc.
- Very powerful stimulant; longer acting than cocaine.
- Can be smoked, snorted, injected or eaten.
- Causes very severe damage to the body; paranoia, delusions, mood disturbances.
- Crystal meth is made by slowly re-crystallizing powdered meth using a solvent such as acetone to remove impurities.

# Stages of the Meth Experience

- Rush- Initial response the abuser feels when using. Rapid heartbeat, blood pressure and pulse soar.
- High- User has feeling of extreme well being, aggressively smarter, intense focus on an insignificant item such as taking apart a TV.
- Binge- Uncontrollable use to maintain the high. Hyperactivity both mentally and physically.
- Tweaking- Drug no longer producing a rush or high. Abuser loses sense of identity, paranoia sets in; psychotic state. Bingeing and Tweaking can go on for days and even weeks.
- Crash- Body shuts down, long periods of sleep (days).
- Hangover and withdrawal- User is drained, depressed, no energy and inability to experience pleasure leading to enforced addiction as solution to these feelings is more use.
- Cycle begins again.

# Methamphetamine



# Meth Paraphernalia





# One Pot Labs

Current trend, much easier than Birch method or Red P labs.

Takes approximately 40-60 minutes.

Remnants usually discarded in environment by cook.

Can be picked up by unsuspecting civilians; contents can be reactivated by movement or introduction of oxygen into the contents.

High potential for bottle failure leading to explosion and fire.



# Heroin



**DEA**

# Heroin

- Derived from opium- poppy plants.
- Comes from Asian countries (Burma Laos & Thailand), mid eastern countries (Afghanistan, Pakistan & Iran) or Mexico & Columbia.
- Used by injecting, snorting or smoking.
- Heroin converts into morphine in the body.
- Highly addictive, rapidly acting opiate.
- Mexican drug cartels took huge loss (estimates of \$40 billion per year) due to medical and recreational marijuana legalization- increase in production of heroin an meth by cartels due to financial losses.
- Risks include HIV, hepatitis and other blood-borne viruses, collapsed veins, infections of the heart, liver and kidney disease.

# Heroin



# Heroin – Effects, Signs & Symptoms

## SHORT-TERM EFFECTS

- “Rush”
- Slowed breathing
- Clouded mental functioning
- Nausea and vomiting
- Sedation; drowsiness
- Hypothermia (body temperature lower than normal)
- Coma or death (due to overdose)

# Heroin – Effects, Signs & Symptoms

## LONG-TERM EFFECTS

- Bad teeth
- Inflammation of the gums
- Constipation
- Cold sweats
- Itching
- Weakening of the immune system
- Coma
- Respiratory (breathing) illnesses
- Muscular weakness, partial paralysis
- Reduced sexual capacity and long-term impotence in men
- Menstrual disturbance in women
- Inability to achieve orgasm (women and men)
- Loss of memory and intellectual performance
- Introversion
- Depression
- Pustules on the face
- Loss of appetite
- Insomnia

# Fentanyl and Other Synthetic Drugs

- Synthetic opioids becoming more popular – often mixed with heroin.
- Fentanyl is 50-100 times stronger than morphine.
- Can be absorbed through the skin or by accidental inhalation.
- Carfentanyl is 100 times more potent than Fentanyl and 10,000 times stronger than morphine; a minuscule amount can kill you.
- Can be in form of powder, blotter paper, tablets, spray.
- Can resemble powdered cocaine or heroin; user unaware of what he/she taking.

# Fentanyl and Other Synthetic Drugs

- For Fentanyl: Symptoms include: respiratory depression or arrest, drowsiness, disorientation, sedation, pinpoint pupils, and clammy skin. The onset of these symptoms usually occurs within minutes of exposure.
- Seek immediate attention; transport to hospital quickly.
- Multiple doses of naloxone may be needed to counter-act against it.



# Lethal Dose Example



Fatal dose of fentanyl  
(2 mg or 2000 mcg)



Fatal dose of carfentanil  
(0.02 mg or 20 mcg)

# Fentanyl in Fake Prescription Pills



# Other Popular Synthetic Drugs

- Synthetic Cannabinoids- Typically smoked; looks like marijuana- called K2, Spice
- Synthetic Cathinones- Stimulants often smoked or snorted; bath salts, plant food. Can look like cocaine or Methamphetamine
- Phenethylamines- Psychoactive stimulants that are very powerful, intended dose would be micro-grams. Bitter powder often diluted in water and placed on blotter paper. Examples include N-bomb or analogues of synthetic hallucinogens 251-NBOMe, 25C-NBOMe, and 25B-NBOMe.

# Narconomics- Cartel Business Model

- Control the drug trade by developing exclusive relationships with their “suppliers” that allow the cartel to keep the price from fluctuating even if/when production is disrupted.
- Top down enterprise; Drug lords, lieutenants, hitmen and falcons.
- Much of the retail trade is handled by street gangs and criminal organizations.
- Rule with violence and terrorism, flood the streets with product.

# Cartel Business Model

- 80-90% of the meth in USA is Mexican meth manufactured by cartel's and transported to the USA.
- Heroin and opiate use is at an all time high- Cartels capitalizing on opiate addiction.
- We are seeing cartel influence and tactics present in the USA
- In Minnesota, we have encountered tunnels, attempts to take over territory, feuds between organizations, violence and guns, body armor amongst members, worship to Santa Muerte and other Mexican deities.

# Santa Muerte



# Worship to Santa Muerte

- Female deity (Lady of Holy Death) in Mexican folk religion.
- Condemned by the Catholic Church despite being modeled after sainthood - considers it devil worship.
- Authorities in Mexico and southern US have linked worship of Santa Muerte to prostitution, drug trafficking, kidnapping, smuggling and homicides.
- Adopted by cartels, gangs and other criminal elements as a symbol of worship or to pay homage to for protection against other criminal elements and police.
- We are seeing shrines and offerings to Santa Muerte in the US and have encountered altars in Rochester, MN.
- Please report Santa Muerte activity to police.

# Worship to Santa Muerte





# What Should I Look For? (As Parents)

- Strange behavior, changes in attitude, behavior and moods, getting into trouble, smoking, drinking.
- Work and school habits and behaviors.
- Use your senses; smell, observations, instinct.
- Check your child's room; décor, hidden items, paraphernalia.
- Who is your child hanging out with and when?
- How does your child obtain funding? Do they have excessive cash or needing cash?

# What Else Should I Do? (As Parents)

- Set boundaries, take away freedoms?
- Provide them with activities; be involved with their lives.
- Talk to them.
- Interfere.
- Get help if you are not sure how to handle the problem.

# So What Should I look For? (As Landlords)

- Paraphernalia.
- Frequent, short term traffic.
- Heavy traffic.
- Traffic at odd hours.
- Suspicious behavior, suspicious subjects.
- Complaints from neighbors.
- Your own observations.

# What Else Should I Do? (As Landlords)

- Have a well written lease.
- Let your tenant know drug related activity will not be tolerated and will be grounds for kicking them out and take action when there are problems.
- Call police when activity is happening.
- Write down license plates.
- Start working on the problem early and be active in getting the problem moved out.

# Thank You. Any Questions?



Stay Out Of Trouble

**Sgt. Paul Wilson**  
**CIU Supervisor**  
**Rochester PD**  
**507-328-6933**  
**[pwilson@rochestermn.gov](mailto:pwilson@rochestermn.gov)**

